

Name: _____

On this page you will practice drawing accidentals. Let's start with the sharp sign, which is like a number sign or hashtag with a slight upward tilt. Draw a sharp sign in each box.



Next is the natural sign. One way to think of this symbol is to draw an 'L' then a '7'. Draw a natural sign in each box.



Finally, the flat sign. A flat is like a smashed 'b'. You can also think of drawing half of a heart with a stem. Try drawing a flat sign in each box.

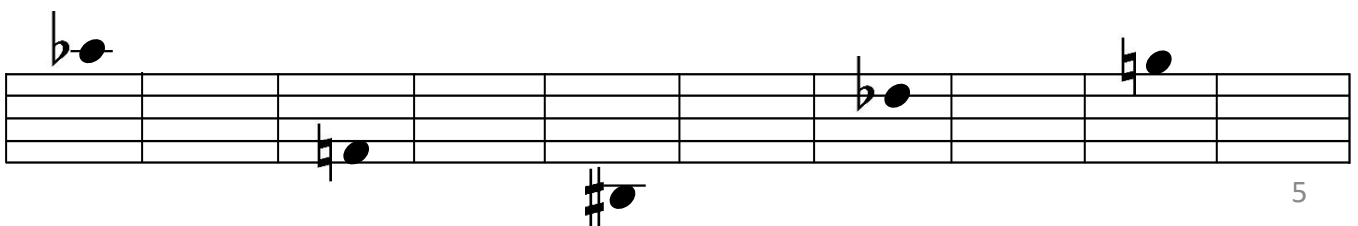


Now place the accidentals on the staff. They should be centered on a space or a line, just like notes are. Please copy each accidental in the following blank measure.



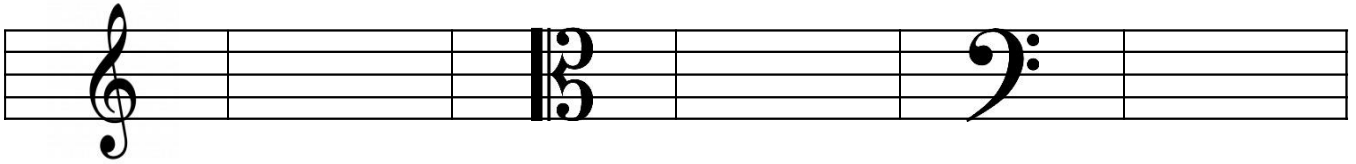
Now put the accidentals together with the notes you have practiced. Remember that **the accidental goes before the note**. Think of it like a dollar sign. Even though you put the dollar sign before the number, you say "five dollars," not "dollars five."

We say and write "F sharp" but we draw "#F"

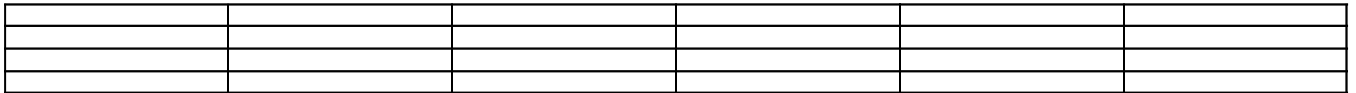


Name: _____

We generally use three clefs in orchestra – treble, alto, and bass. Copy each clef in the following blank measure and write in which instrument(s) use it in the blank below.



Now try drawing the clef you use most six times for practice.



Practice note writing by drawing your clef in the beginning of each staff and then copying each measure of notes in the following blank measure.

