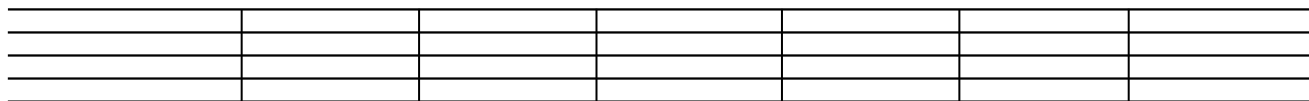


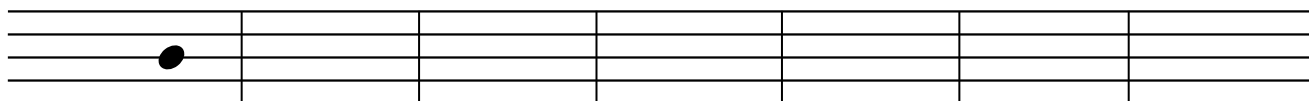
Name: _____

For each staff below:

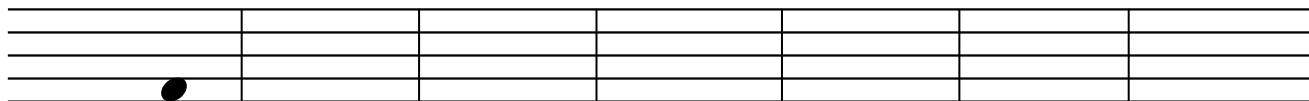
1. Draw your clef
2. Using the given note as a starting point, follow the generic interval and direction given to draw a new note in the second measure.
3. Use this new note as a starting point for the next measure.



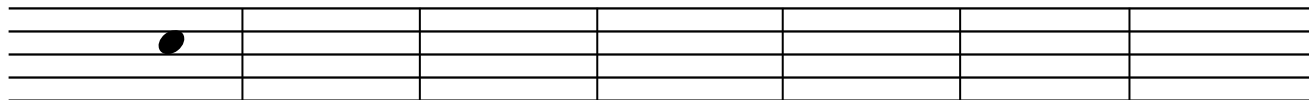
D ↑ 5 ↑ 3 ↓ 2 ↓ 7 ↑ 4 ↑ 2



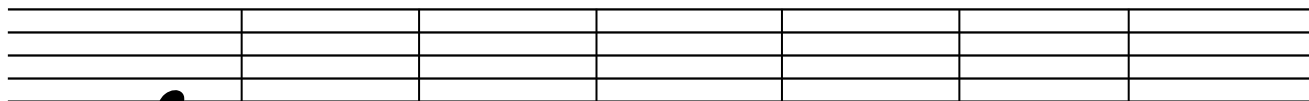
B ↓ 4 ↓ 3 ↑ 2 ↑ 5 ↑ 3 ↓ 6



F ↓ 3 ↑ 4 ↑ 2 ↑ 3 ↓ 5 ↑ 2



C ↓ 7 ↑ 4 ↑ 2 ↓ 5 ↓ 2 ↑ 6



E ↑ 6 ↓ 5 ↑ 3 ↑ 2 ↓ 4 ↓ 3