

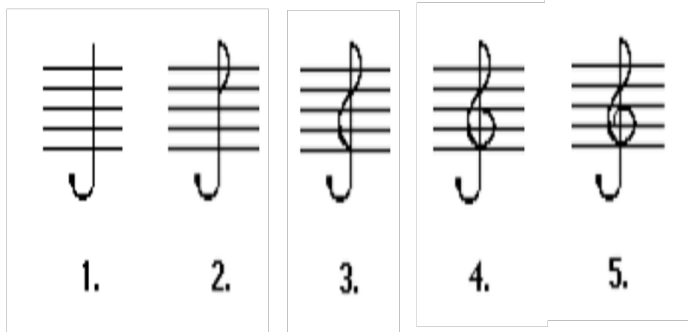
CLEFS

The clef is a symbol drawn at the beginning of each staff. There are 4 different clefs. We will learn about 3 clefs used in orchestra. The clef is important because it determines the letter note names of the lines and spaces on the staff.

Violinists use **Treble Clef**:



← This line is called a **G**



Violists use **Alto Clef** (and sometimes Treble Clef).



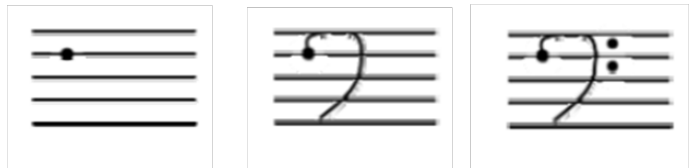
← This line is called a **C**



Cellists use **Bass clef** (and sometimes Tenor, Alto and Treble Clef).



← This line is called an **F**

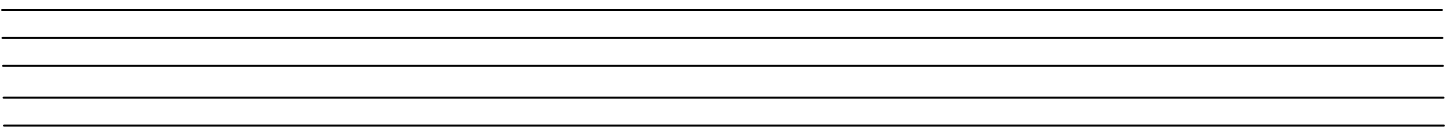


Bassists use **Bass Clef** (and sometimes Tenor, Alto and Treble Clef).

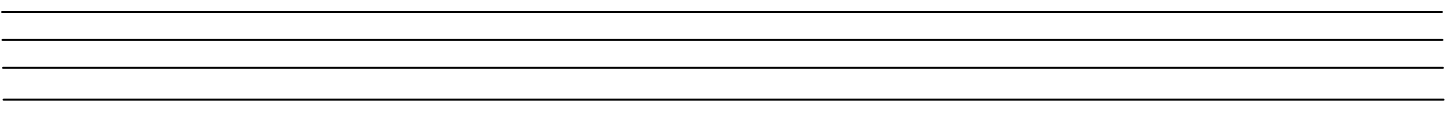


← This line is called an **F**

Draw 10 clefs on the staff below. Draw the clef you will use with your instrument.

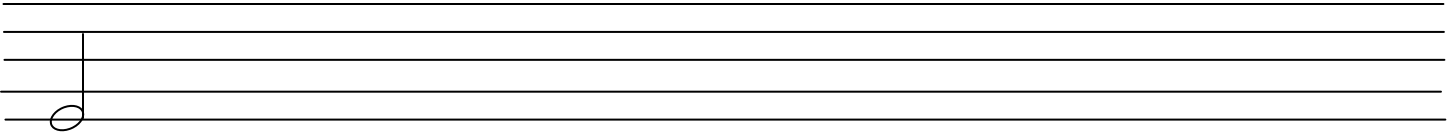


Pick another clef and draw 10 more:



Drawing Notes with Stems on the Staff

Draw a note with a stem on the correct **line** over each box.



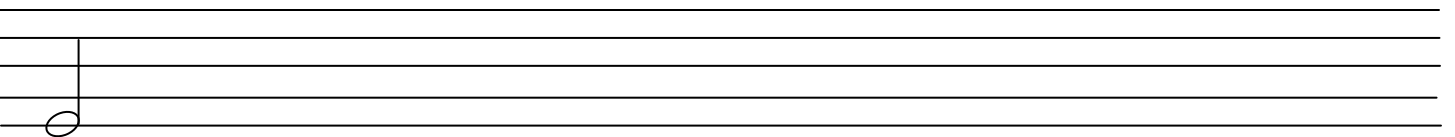
- | | | | | | | | | |
|--------|--------|--------|--------|--------|--------|--------|--------|--------|
| Line 1 | Line 3 | Line 2 | Line 5 | Line 4 | Line 1 | Line 4 | Line 2 | Line 3 |
|--------|--------|--------|--------|--------|--------|--------|--------|--------|

Draw a note with a stem on the correct **space** over each box.



- | | | | | | | | | |
|---------|---------|---------|---------|---------|---------|---------|---------|---------|
| Space 1 | Space 4 | Space 3 | Space 2 | Space 4 | Space 1 | Space 3 | Space 2 | Space 1 |
|---------|---------|---------|---------|---------|---------|---------|---------|---------|

Draw a note with a stem on the correct **line or space** over each box.



- | | | | | | | | | |
|--------|---------|---------|--------|---------|--------|--------|---------|--------|
| Line 1 | Space 4 | Space 2 | Line 5 | Space 1 | Line 3 | Line 2 | Space 3 | Line 4 |
|--------|---------|---------|--------|---------|--------|--------|---------|--------|