

NAME \_\_\_\_\_

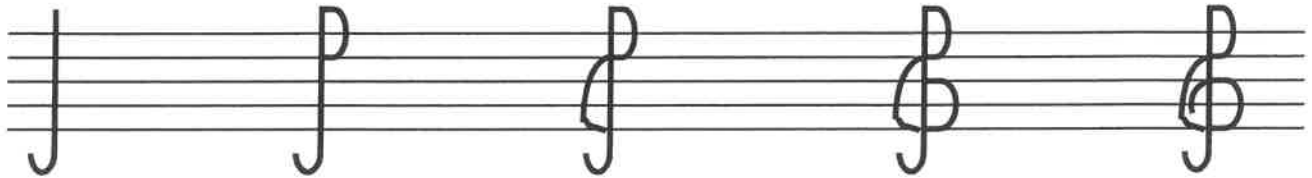
## LESSON 1

1. The treble clef, or \_\_\_\_\_ clef names the line G when placed on the staff.

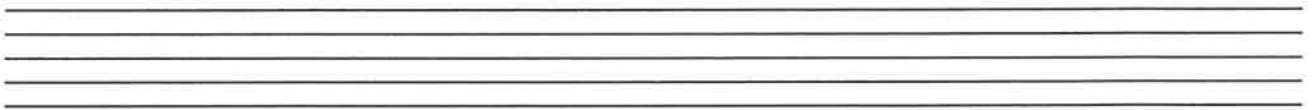
On the staff, this note is written on line \_\_\_\_\_.  
*letter* *number*

2. There are five steps to follow when drawing a treble clef or G clef.

A. Trace each step on the staff below.



B. Draw six more treble clefs on the staff below.

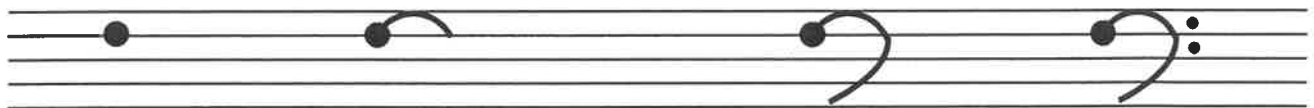


3. The bass clef, or \_\_\_\_\_ clef names the line F when placed on the staff.

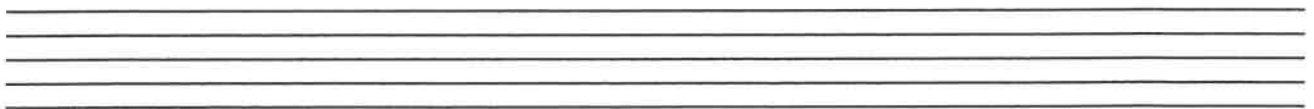
On the staff, this note is written on line \_\_\_\_\_.  
*letter* *number*

4. There are four steps to follow when drawing a bass clef or F clef.

A. Trace each step on the staff below.



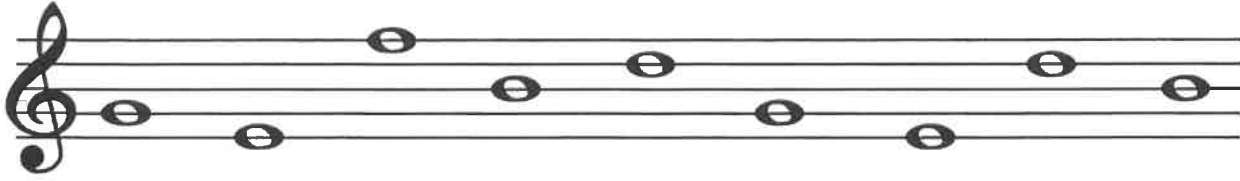
B. Draw six more bass clefs on the staff below.



NAME \_\_\_\_\_

## LESSON 2

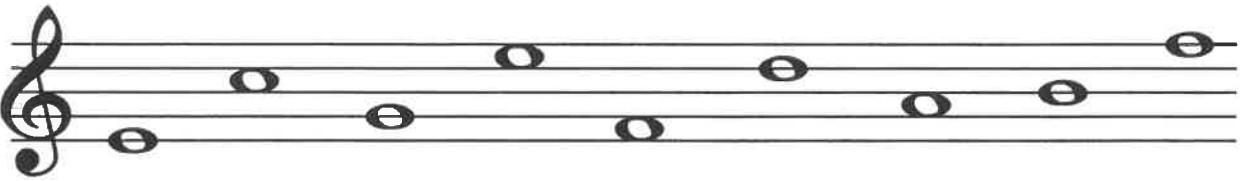
1. Write the names of the following notes on the line below the staff.



\_\_\_\_\_

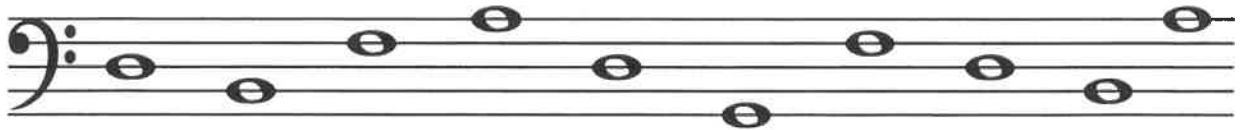


\_\_\_\_\_

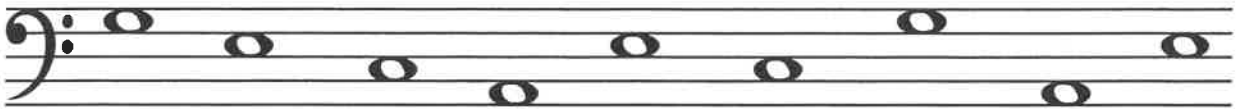


\_\_\_\_\_

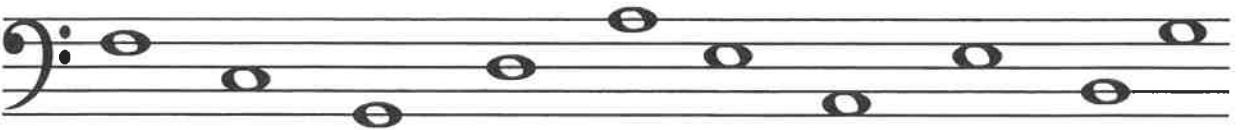
2. Write the names of the following notes on the line below the staff.



\_\_\_\_\_



\_\_\_\_\_



\_\_\_\_\_