

NAME _____

LESSON 16

The **major scale pattern** determines what sharps or flats are used in a major scale. Never mix sharps and flats in a major scale. A **scale degree** is a number given to each note in the order of the scale going up. The half steps in a major scale are marked by slurs. 1 2 3 4 5 6 7 8

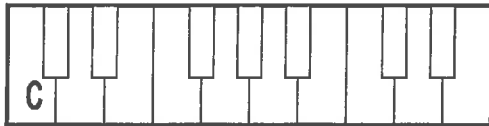
1. The whole step and half step pattern of the major scale is:

2. Start on the given key and write the names of the keys following the major scale whole and half step pattern.

What is the name of the keynote or tonic? _____

Did you use any sharps or flats in the scale? Yes no

Note names:



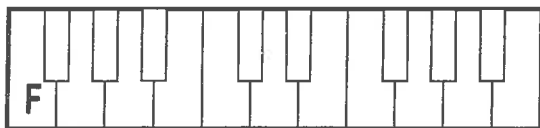
3. Complete the scale on the staff.
- Write the scale degree above each note.
 - Circle the keynote.
 - Draw sharps or flats if needed.
 - Mark the half steps with slurs.

4. Start on the given key and write the names of the keys following the major scale whole and half step pattern.

What is the name of the keynote or tonic? _____

Did you use any sharps or flats in the scale? Yes no

Note names:

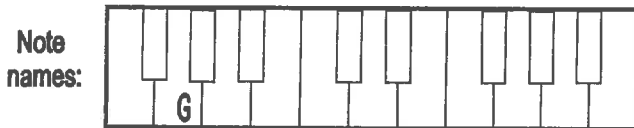


5. Complete the scale on the staff.
- Write the scale degree above each note.
 - Circle the keynote.
 - Draw sharps or flats if needed.
 - Mark the half steps with slurs.

NAME _____

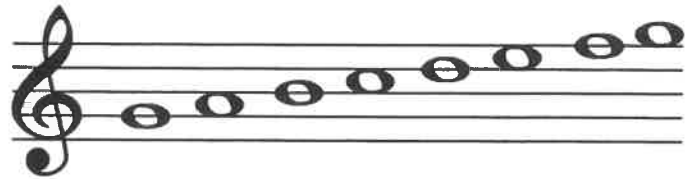
LESSON 16 (cont.)

6. Start on the given key and write the names of the keys following the major scale whole and half step pattern.



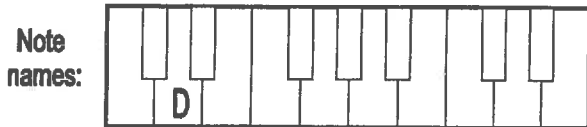
What is the name of the keynote or tonic? ____

Did you use any sharps or flats in the scale? Yes no



7. Complete the scale on the staff.
A. Write the scale degree above each note.
B. Circle the keynote.
C. Draw sharps or flats if needed.
D. Mark the half steps with slurs.

8. Start on the given key and write the names of the keys following the major scale whole and half step pattern.



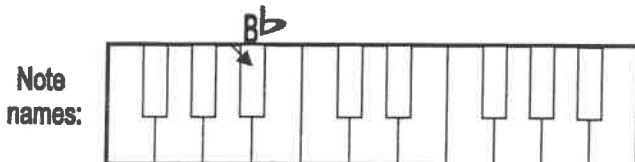
What is the name of the keynote or tonic? ____

Did you use any sharps or flats in the scale? Yes no



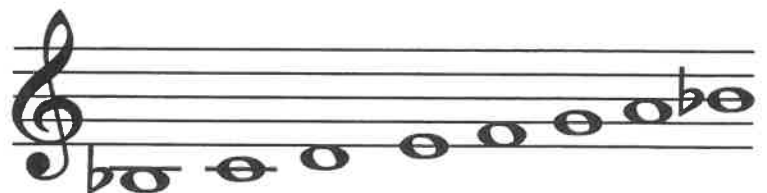
9. Complete the scale on the staff.
A. Write the scale degree above each note.
B. Circle the keynote.
C. Draw sharps or flats if needed.
D. Mark the half steps with slurs.

10. Start on the given key and write the names of the keys following the major scale whole and half step pattern.



What is the name of the keynote or tonic? ____

Did you use any sharps or flats in the scale? Yes no



11. Complete the scale on the staff.
A. Write the scale degree above each note.
B. Circle the keynote.
C. Draw sharps or flats if needed.
D. Mark the half steps with slurs.