

NAME _____

LESSON 7



This is a 16th note. In 4/4 time it receives 1/4 of a beat.
It looks like a quarter note with two flags.



This is a 16th rest. In 4/4 time it receives 1/4 of a beat of silence.

1. Draw three 16th notes.

2. Draw three 16th rests.

When counting 16th notes or 16 rests, write a number or syllable under each note or rest.

1 e & a 2 e & a 3 e & a 4 e & a

3. Write counts under each note or rest.

In 4/4 time, a 16th note can be written in combination with an 8th note.

4. Write counts under each note or rest.

NAME _____

LESSON 8

Meter is the organization of strong and weak beats. There are two basic types of meter:

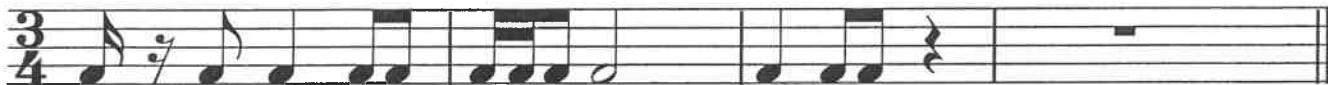
I. Simple meter

- A. A meter in which the beat can be divided into two or four parts.
- B. Time signatures have a top number of 2, 3 or 4.
- C. The beat is easily felt using a conducting pattern.

Simple meter uses a "simple" pattern for every beat. There is one "stroke" for each beat.

Beat 1 is the called the **DOWNBEAT**. Can you see why?

1. Write the counts under each note or rest.



2. Write the correct top number for each time signature below.

